

**USDA NRCS  
WASHINGTON STATE  
Eastern Washington**

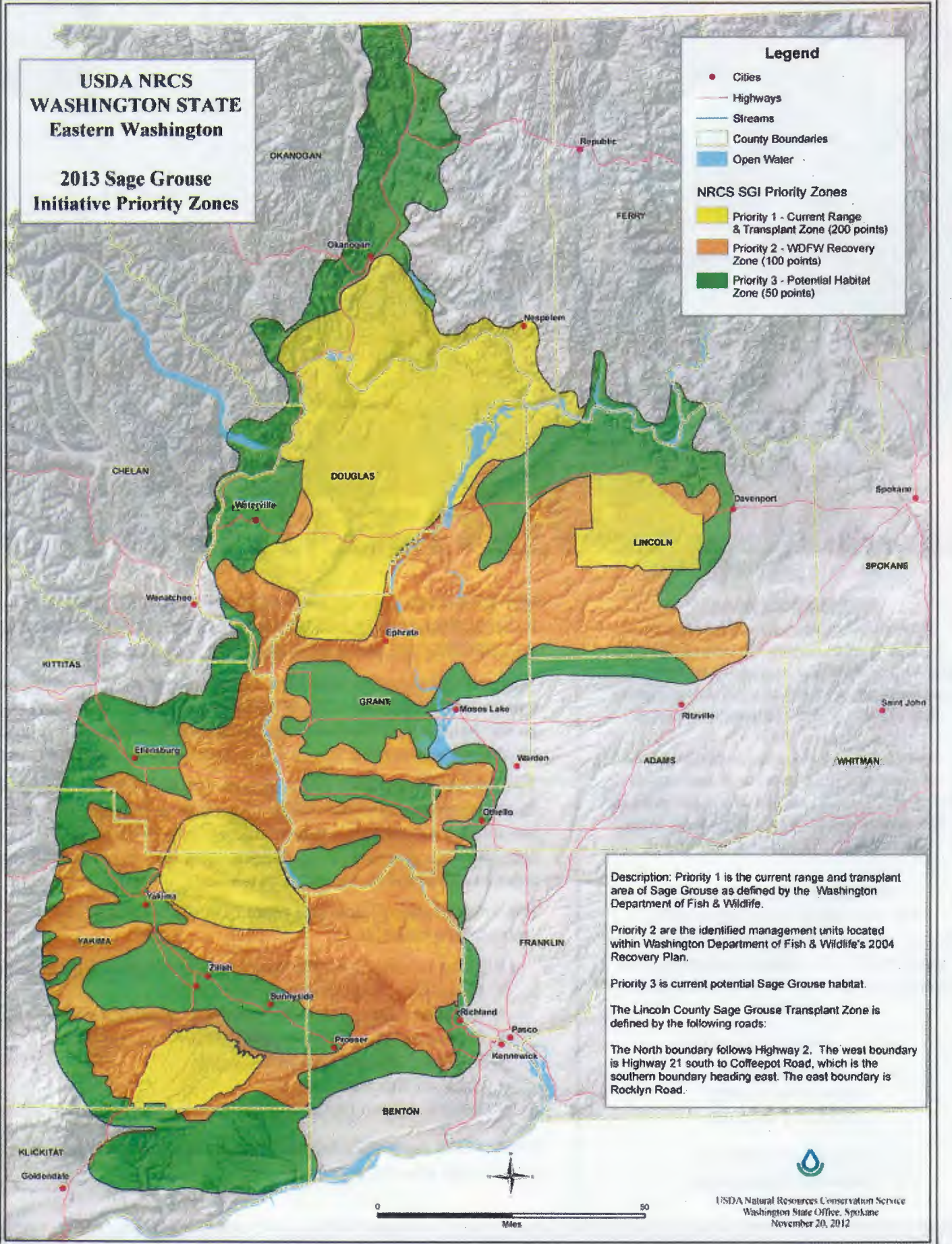
**2013 Sage Grouse  
Initiative Priority Zones**

**Legend**

- Cities
- Highways
- Streams
- County Boundaries
- Open Water

**NRCS SGI Priority Zones**

- Priority 1 - Current Range & Transplant Zone (200 points)
- Priority 2 - WDFW Recovery Zone (100 points)
- Priority 3 - Potential Habitat Zone (50 points)



Description: Priority 1 is the current range and transplant area of Sage Grouse as defined by the Washington Department of Fish & Wildlife.

Priority 2 are the identified management units located within Washington Department of Fish & Wildlife's 2004 Recovery Plan.

Priority 3 is current potential Sage Grouse habitat.

The Lincoln County Sage Grouse Transplant Zone is defined by the following roads:

The North boundary follows Highway 2. The west boundary is Highway 21 south to Coffeepot Road, which is the southern boundary heading east. The east boundary is Rocklyn Road.

